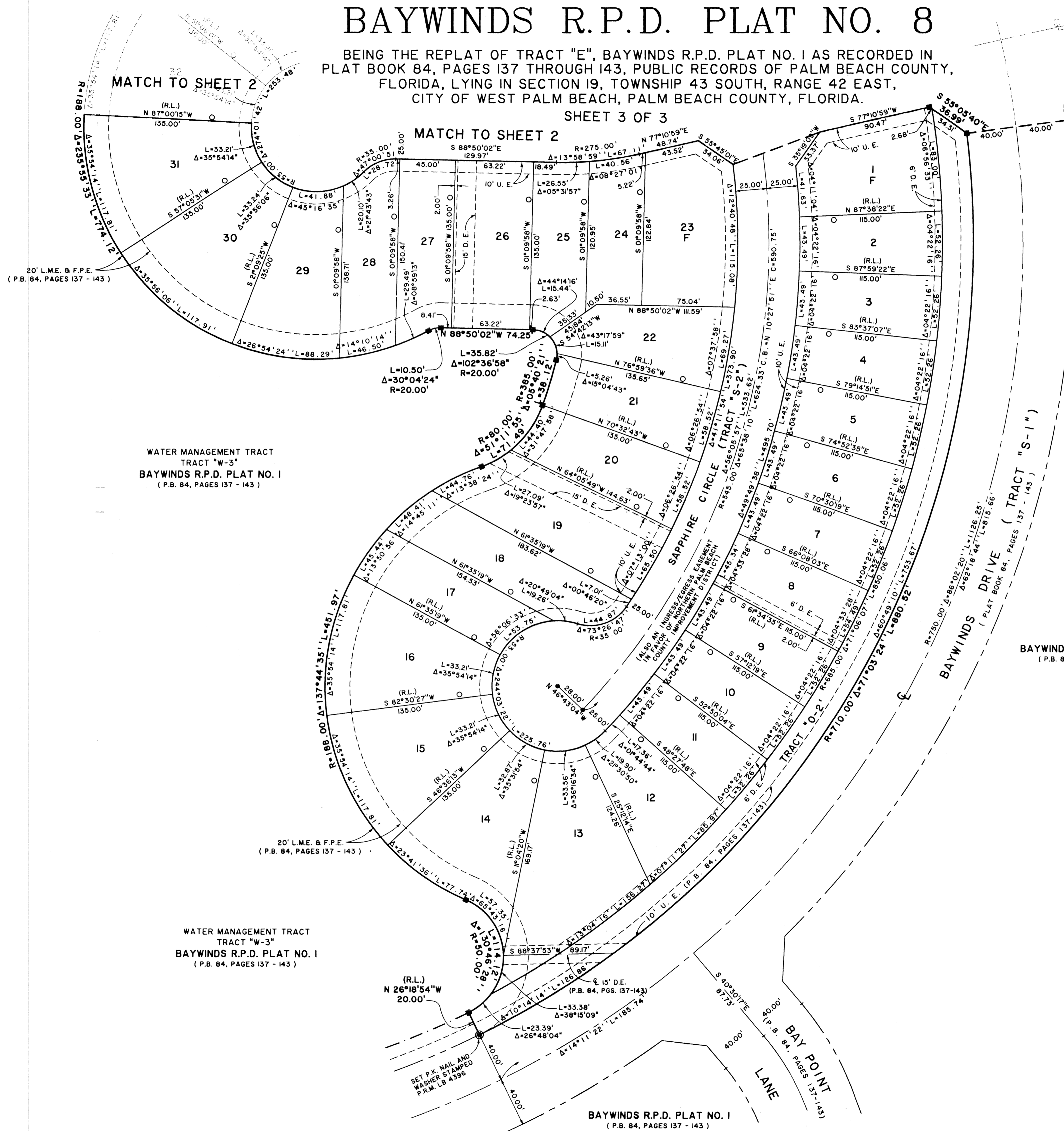


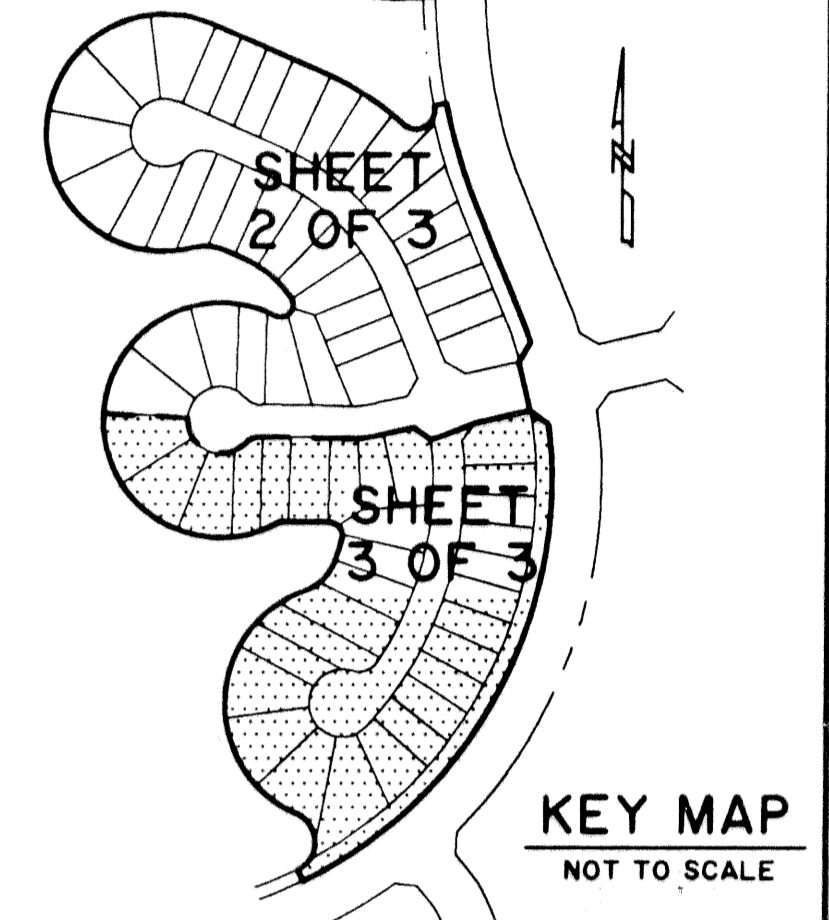
BAYWINDS R.P.D. PLAT NO. 8

BEING THE REPLAT OF TRACT "E", BAYWINDS R.P.D. PLAT NO. 1 AS RECORDED IN PLAT BOOK 84, PAGES 137 THROUGH 143, PUBLIC RECORDS OF PALM BEACH COUNTY, FLORIDA, LYING IN SECTION 19, TOWNSHIP 43 SOUTH, RANGE 42 EAST, CITY OF WEST PALM BEACH, PALM BEACH COUNTY, FLORIDA.

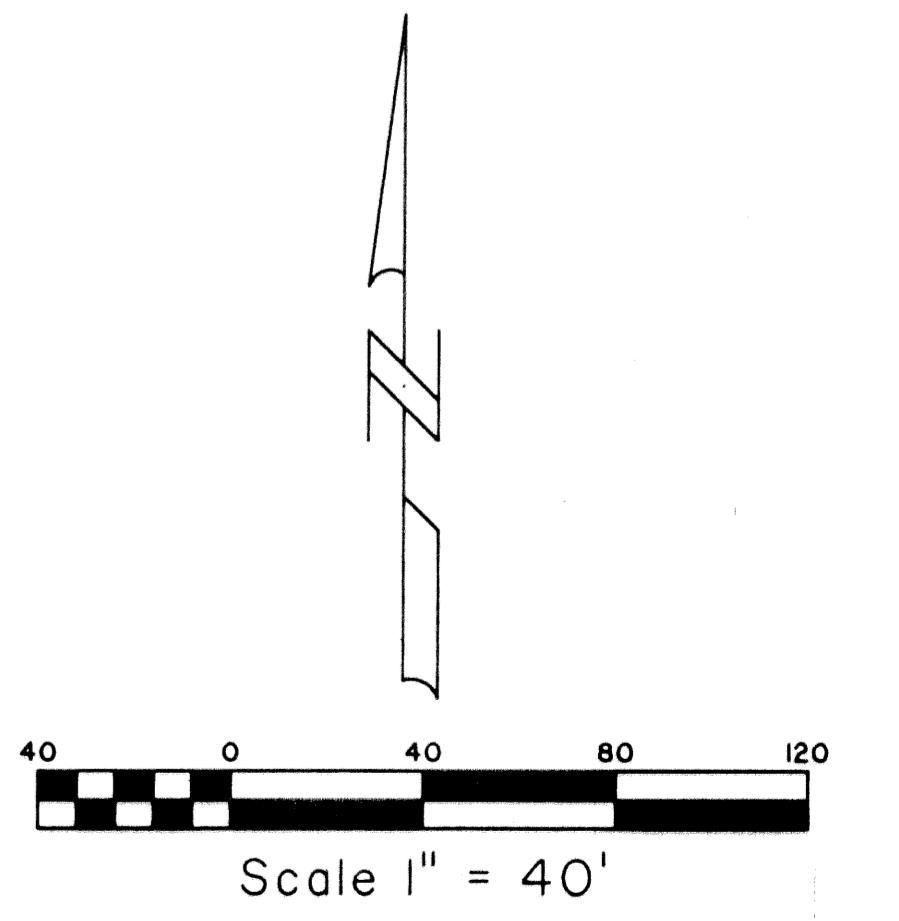
SHEET 3 OF 3



STATE OF FLORIDA SS
 COUNTY OF PALM BEACH
 THIS PLAT WAS FILED FOR RECORD AT _____
 _____ M. THIS _____ DAY OF _____ 2001
 AND DULY RECORDED IN PLAT BOOK NO. _____
 ON PAGE _____
 DOROTHY H. WILKEN,
 CLERK OF THE CIRCUIT COURT
 BY _____ D.C.



BAYWINDS R.P.D. PLAT NO. 1
 (P.B. 84, PAGES 137 - 143)

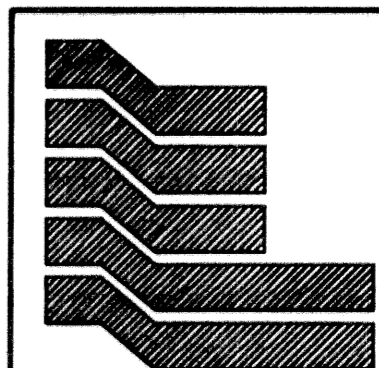


WATER MANAGEMENT TRACT
 TRACT "W-3"
 BAYWINDS R.P.D. PLAT NO. 1
 (P.B. 84, PAGES 137 - 143)

WATER MANAGEMENT TRACT
 TRACT "W-3"
 BAYWINDS R.P.D. PLAT NO. 1
 (P.B. 84, PAGES 137 - 143)

BAYWINDS R.P.D. PLAT NO. 1
 (P.B. 84, PAGES 137 - 143)

RECEIVED
 FEB 08 2001



Landmark Surveying & Mapping Inc.
 1850 Forest Hill Boulevard
 Ph. (561) 433-5405 Suite 100 W.P.B. Florida
 LB # 4396

BAYWINDS R.P.D. PLAT NO. 8
 (TRACT "E")